

The *So.Re.Com. "A.S. de Rosa" @-library* for Documentation, Networking, and Training

Annamaria Silvana de Rosa
Sapienza University of Rome, Italy

INTRODUCTION

Knowledge Domain

Originated from Serge Moscovici's¹ *Opera Prima* (1961), Social Representations theory (S.R.), originally European, is currently a multilingual worldwide field with a substantial body of literature in social psychology and other social science. Studies of "what" people know – and "how" this lay people knowledge relates to the social groups to which they belong and are shaped by the polyphonic traditional and new media system – are concerned with the social construction of everyday knowledge and the related socially situated practices. The "objects" studied have a strong societal impact in the social spheres.

This *supra-disciplinary field* is characterised by a *great consistency in terms of epistemological and theoretical inspiration* and a rich diversity both:

- From the *paradigmatic point of view* ("structural," "social positioning," "monographic," "anthropological," "dialogical," "modelling" approaches);
- In terms of *methodological research designs* (qualitative, monographic, anthropological, experimental, descriptive, structural, visual-figurative, multi-methodological, etc.);
- From the *thematic point of view*
- With respect to the *applied contexts and domains of expert and lay knowledge production and transmission*: education, health, economics, environment, tourism, politics, organisations, media industry, etc.

The goal of this contribution is to present background, mission and future research directions of the *So.Re.Com. "A.S. de Rosa" @-library*: a *digital platform integrating scientific documentation, networking and training purposes* in the field of *Social Representations and Communication* (So.Re.Com.).

BACKGROUND

Born from a personal bibliographic inventory, initially including almost 500 references in the field of Social Representations and Communication, the *So.Re.Com. "A.S. de Rosa" @-library* has been transferred into an ad-hoc designed relational database implemented in 1996 on the *European/International Joint PhD in Social Representations and Communication* website (de Rosa, 2000, 2001, 2004 a, 2004 b, 2006; 2008, 2009 a, 2009 b, 2010 a, 2010 b, 2010 c; 2011; de Rosa, Picone, 2007).

It is built on an on-going multi-year project aimed at an *empirical meta-theoretical analysis of the whole literature on Social Representations* (de Rosa, A.S. 2013 a, 2013 b). Guided by the main goal of evaluating *the impact of the scientific production driven by the Social Representations theory in the social arena faced with social demand*, the aim is to take stock of the scientific field developed in more than 50 years by conducting an empirical meta-theoretical analysis of the literature on Social Representations, mapping the development of different paradigms, the related research methods, the thematic areas and their impact on the various applied fields within the multi-generational community of scientists and across different geo-cultural contexts. This research program is led by de Rosa, creator and program director of both the *European/International Joint PhD in S.R. & C.* (<http://www.europhd.eu>) and

DOI: 10.4018/978-1-4666-5888-2.ch487

the *So.Re.Com. THEmatic NETwork* (<http://www.eu-ro-phd.eu/SoReComTHEmaticNETwork>), a *network of networks* that promotes co-operation between academic, professional research and commercial institutions and facilitates the dissemination of scientific results in the field of Social Representations (see Figures 1 and 2).

Located at Sapienza University of Rome Sapienza - the largest university in Europe with a patrimony of 155 libraries and a recent investment in digitalising contents² - the state-of-the-art of the *Social Representations and Communication Research Centre and Multimedia Lab* includes the integrated specialized physical and *So.Re.Com. "A.S. de Rosa" @-Library*. It is the nerve centre of the *European/International Joint PhD programme in Social Representations and Communication*, the training structure of the wider *So.Re.Com. THEmatic NETwork*, dedicated to research and training needs for both doctoral candidates and highly experienced researchers, individually or in cross-national research teams.

Recently (2012) transferred from its historical location opposite Campidoglio to another larger location in the very heart of Rome at the top of Aventino hill, overlooking the capital' archaeological-architectonic

centre, it guarantees technical support for training and management activities, including real-time interactive exchanges with partner institutions around the globe.

Full-time staff is available to provide assistance to users.

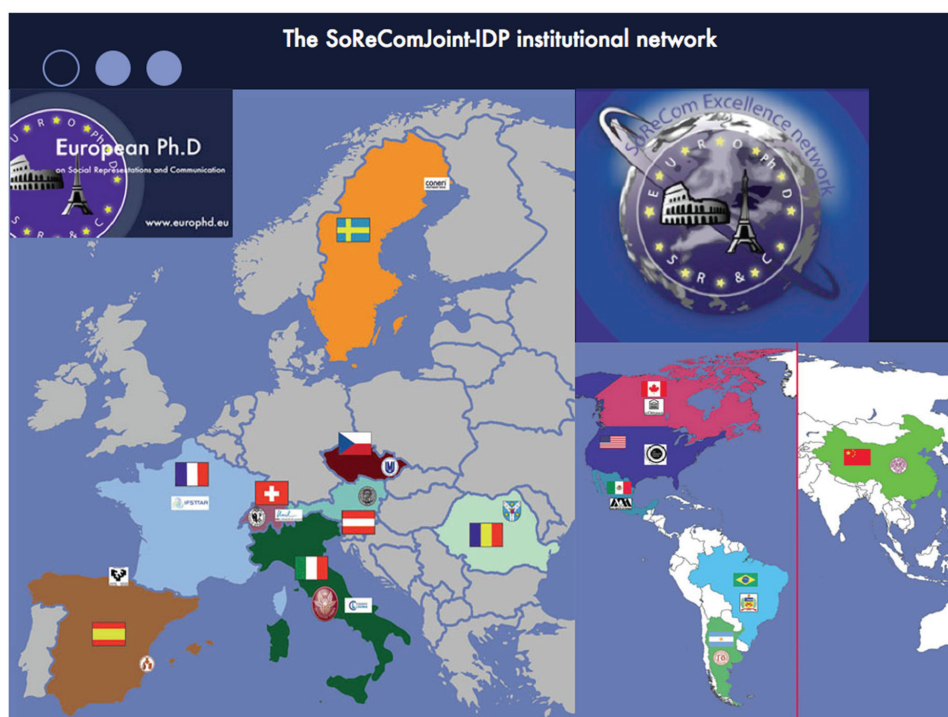
MISSION

A research environment "*based on*" and "*aimed at*" integrating *scientific documentation, networking and training purposes*.

The *So.Re.Com. "A.S. de Rosa" @-library* is a multipurpose digital environment of interrelated relational databases conceived in the logic of the semantic web, including multiple web interfaces aimed to integrate *documentation services*, with *networking and research training*.

Once the ongoing migration into an open access platform will be completed, the *So.Re.Com. "A.S. de Rosa" @-library* will answer the increasing demand for multi-lingual access to multi-format documentation in Social Representations and Communication, also from users in disadvantaged areas in the world

Figure 1. The *So.Re.Com. Joint Innovative Doctoral Program* institutional network.



10 more pages are available in the full version of this document, which may be purchased using the "Add to Cart" button on the publisher's webpage:

www.igi-global.com/chapter/the-sorecom-as-de-rosa--library-for-documentation-networking-and-training/112941

Related Content

A System to Match Behaviors and Performance of Learners From User-Object Interactions: Model and Architecture

José Guillermo Hernández-Calderón, Edgard Benítez-Guerrero, José Rafael Rojano-Cáceres and Carmen Mezura-Godoy (2019). *International Journal of Information Technologies and Systems Approach* (pp. 82-103).

www.irma-international.org/article/a-system-to-match-behaviors-and-performance-of-learners-from-user-object-interactions/230306

International Digital Studies: A Research Approaches for Examining International Online Interactions

Kirk St. Amant (2004). *Readings in Virtual Research Ethics: Issues and Controversies* (pp. 317-337).

www.irma-international.org/chapter/international-digital-studies/28306

Image Segmentation Using Rough Set Theory: A Review

Payel Roy, Srijan Goswami, Sayan Chakraborty, Ahmad Taher Azar and Nilanjan Dey (2014). *International Journal of Rough Sets and Data Analysis* (pp. 62-74).

www.irma-international.org/article/image-segmentation-using-rough-set-theory/116047

Information Systems, Software Engineering, and Systems Thinking: Challenges and Opportunities

Doncho Petkov, Denis Edgar-Nevill, Raymond Madachy and Rory O'Connor (2008). *International Journal of Information Technologies and Systems Approach* (pp. 62-78).

www.irma-international.org/article/information-systems-software-engineering-systems/2534

Multimodality Medical Image Fusion using M-Band Wavelet and Daubechies Complex Wavelet Transform for Radiation Therapy

Satishkumar S. Chavan and Sanjay N. Talbar (2015). *International Journal of Rough Sets and Data Analysis* (pp. 1-23).

www.irma-international.org/article/multimodality-medical-image-fusion-using-m-band-wavelet-and-daubechies-complex-wavelet-transform-for-radiation-therapy/133530