

Texture Features in Palmprint Recognition System

C. Naveena, SJB Institute of Technology, Visvesvaraya Technological University, India

Shreyas Rangappa, SJB Institute of Technology, Visvesvaraya Technological University, India

Chethan H. K., MIT Thandvapura, Visvesvaraya Technological University, India

ABSTRACT

This paper describes the algorithm used for personal identification based on features extracted from the palmprint. The local Gabor XOR (LGXP) features is built using Gabor filter with orientation. Initially, the palm print images are preprocessed using median filter. The algorithm is then modified, where features are extracted with different orientations of the Gabor filter called the multiple orientation LGXP (MOLGXP) features. The PCA feature is extracted and fused with MOLGXP and PCA using sum rule.

KEYWORDS

Gabor, LGXP, PCA

INTRODUCTION

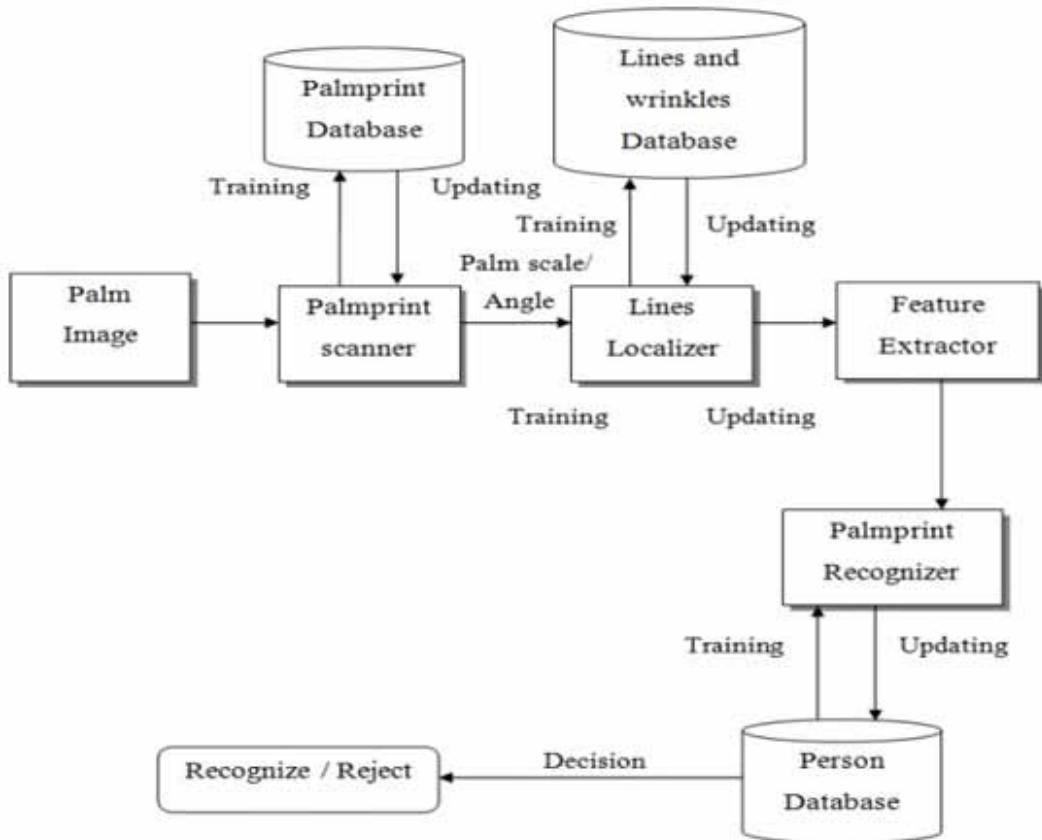
The multibiometric systems with multiple biometric sources is designed to build Biometric systems. Multibiometrics is expected to alleviate some of the limitations of unimodal biometric systems. In multi-algorithm based multibiometric systems, the same biometric trait is processed using multiple algorithms. Biometric systems based on palmprints have gained preference due to ease of acquisition, high user acceptance, non-intrusiveness, reliability and stable structural features. Palmprint based personal identification is a potential and a very effective biometric system since it offers widely discernible and discriminating features like principal lines, wrinkles, ridges and minutiae points. Today, palmprint recognition plays a significant role in the area of network multimedia information access and also palmprint is comparatively new biometric technology. The palmprints recognition system is depicted in Figure 1.

LITERATURE SURVEY

This paper presents an overview of palmprint and its related work. The palm is defined as the inner surface of our hand from the wrist to the root of fingers. Yoti Malik et al. (Malik et al., 2011) introduced a fast complex Gabor wavelet based palmprint authentication. Shashikala & Raja (Shashikala & Raja, 2012) presented a palmprint identification based on DWT, DCT, and QPCA. Histogram equalization is employed to palmprint improve dissimilarity of an image. Priya Dudhanale & Ganorka (Priya Dudhanale & Ganorka, 2014) carried out a study of person identification using palmprint recognition system based on minutiae cylindrical code. Haifeng Sang et al. (Sang et al., 2013) presented a robust palmprint recognition based on touch-less color palmprint Images. Cappelli et al. (Cappelli et al., 2012)

DOI: 10.4018/IJNCR.2021010104

Figure 1.



made use of a fast and accurate palmprint recognition system based on minutiae. Here, a high-resolution palmprint recognition system is designed depending on minutiae. Aditya Tiroidkar et al.(Kekre et al., 2011) performed an evaluation of palmprint recognition techniques using DCT. Nibouche et al. (Nibouche et al., 2012) made an analysis of the performance of palmprint matching. Here, a novel and easy palmprint recognition solution derived from sparse representation is developed. Subhajit Karar & Ranjan Parekh (Karar & Parekh, 2013) presented palmprint recognition using Phase Symmetry. Zhang et al. (Wu et al., 2003) discussed an online joint palmprint and palm vein verification. Mani Malek Esmaeili et al. (Esmaeili et al., 2011) analyzed a robust and fast video copy detections system using content-based fingerprinting. A video copy detection system depended on content fingerprinting and utilized for video indexing and copyright applications are presented. Sandeep Kaur & Gaganpreet Kaur(Kaur & Kaur, 2013) explored an optimized palm recognition using cuckoo search algorithm. Siddharth et al. (Siddharth et al., 2014) presented an authentication by palmprint recognition using phase-difference trained by probability neural network. Xuan Wang et al.(Wang et al., 2013) briefed an on-line fast palmprint identification based on adaptive lifting of wavelet scheme.

Research has shown promising results on employing these approaches individually. However, efforts are still require to achieve higher performance for their use in higher security application. These unimodal approaches rely on the evidence of a single source of information for authentication of person. Noisy data, intra-class variation, interclass similarities, non-universality, spoofing, etc., problems are imposed by unimodal biometric systems which tend to increase false acceptance rate (FAR) and false rejection rate (FRR), ultimately reflecting towards poor performance of the system.

15 more pages are available in the full version of this document, which may be purchased using the "Add to Cart" button on the publisher's webpage: www.igi-global.com/article/texture-features-in-palmprint-recognition-system/274937

Related Content

Traffic Noise: 1/f Characteristics

K. B. Patange, A. R. Khan, S. H. Behere and Y. H. Shaikh (2011). *International Journal of Artificial Life Research* (pp. 1-11).

www.irma-international.org/article/traffic-noise-characteristics/62068

Feature Selection and Recognition of Face by using Hybrid Chaotic PSO-BFO and Appearance-Based Recognition Algorithms

Santosh Kumar and Sanjay Kumar Singh (2015). *International Journal of Natural Computing Research* (pp. 26-53).

www.irma-international.org/article/feature-selection-and-recognition-of-face-by-using-hybrid-chaotic-psy-bfo-and-appearance-based-recognition-algorithms/146883

DNA Computing: Future of Renewable Smart Computation Systems

Mandrita Mondal (2022). *Applications of Nature-Inspired Computing in Renewable Energy Systems* (pp. 116-135).

www.irma-international.org/chapter/dna-computing/294390

Image Reconstruction of Electrical Impedance Tomography Using Fish School Search and Differential Evolution

Valter Augusto de Freitas Barbosa, Wellington Pinheiro dos Santos, Ricardo Emmanuel de Souza, Reiga Ramalho Ribeiro, Allan Rivalles Souza Feitosa, Victor Luiz Bezerra Araújo da Silva, David Edson Ribeiro, Rafaela Covello Freitas, Manoela Paschoal, Natália Souza Soares, Rodrigo Beltrão Valença, Rodrigo Luiz Tomio Ogawa and Ítalo José do Nascimento Silva Araújo Dias (2018). *Critical Developments and Applications of Swarm Intelligence* (pp. 301-338).

www.irma-international.org/chapter/image-reconstruction-of-electrical-impedance-tomography-using-fish-school-search-and-differential-evolution/198931

Box-Counting Dimension of Fractal Urban Form: Stability Issues and Measurement Design

Shiguo Jiang and Desheng Liu (2012). *International Journal of Artificial Life Research* (pp. 41-63).

www.irma-international.org/article/box-counting-dimension-of-fractal-urban-form/81213