

# Chapter 15

## Remote Fault Diagnosis System for Marine Power Machinery System

**Chengqing Yuan**

*Reliability Engineering Institute, Wuhan  
University of Technology, China*

**Xinping Yan**

*Reliability Engineering Institute, Wuhan  
University of Technology, China*

**Zhixiong Li**

*Reliability Engineering Institute, Wuhan  
University of Technology, China*

**Yuelel Zhang**

*Reliability Engineering Institute, Wuhan  
University of Technology, China*

**Chenxing Sheng**

*Reliability Engineering Institute, Wuhan  
University of Technology, China*

**Jiangbin Zhao**

*Reliability Engineering Institute, Wuhan  
University of Technology, China*

### ABSTRACT

*Marine power machinery parts are key equipments in ships. Ships always work in rigorous conditions such as offshore, heavy load, et cetera. Therefore, the failures in marine power machinery would badly threaten the safety of voyages. Keeping marine power machineries running reliably is the guarantee of voyage safety. For the condition monitoring and fault diagnosis of marine power machinery system, this study established the systemic condition identification approach for the tribo-system of marine power machinery and developed integrated diagnosis method by combining on-line and off-line ways for marine power machinery. Lastly, the remote fault diagnosis system was developed for practical application in marine power machinery, which consists of monitoring system in the ship, diagnosis system in laboratory centre, and maintenance management & maintenance decision support system.*

### INTRODUCTION

Marine power machinery systems provide power supply for ships. Any failures in the system may induce terrible marine accidents. Hence, the normal

operation of the marine power machinery system is essential for a safe trip. However, exposed to hostile environment, the marine power machinery systems are readily to break down (Jones & Li, 2000; Yan, 2005a; Li, Z., 2010a, 2011a & 2011b; Li, W. 2001). It is therefore imperative to diagnose

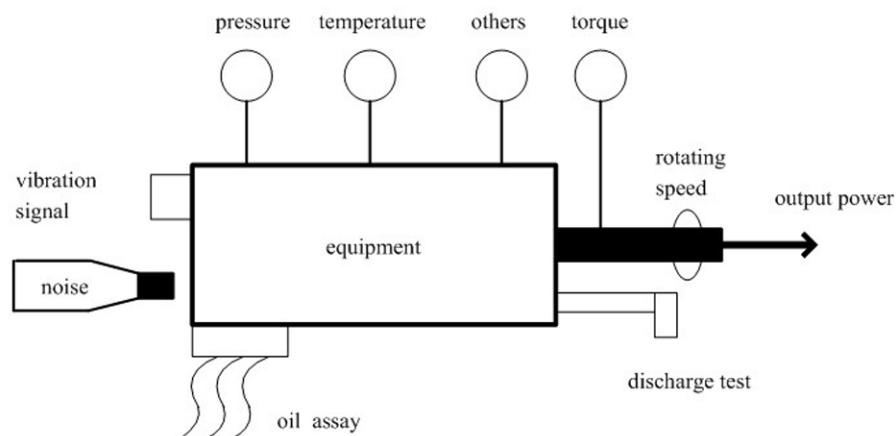
DOI: 10.4018/978-1-4666-2095-7.ch015

impending faults of marine power machinery systems to prevent malfunctions.

*Machinery condition monitoring and fault diagnosis* (CMFD) technique initially emerged at the end of 1960s, and the research work published in the journal of Automatica can be regarded as the milestone of CMFD (Mehra & Peschon, 1971), which led to a series of scientific and industrial activities in the field of large-scale machinery and equipment condition monitoring projects. As for the field of marine engineering, the marine industry over the world has made strict instructions for the CMFD of marine power machinery. American Bureau of Shipping (ABS) has drafted the “Test Guide of Preventive Maintenance” in 1987 (An aligned, 2006; Leontopoulos, 2005; Low & Lim, 2004). Det Norske Veritas (DNV) has emphasized the CMFD of main engine and shaft line in their “Test Handbook of marine main engine and shaft line” (An aligned, 2006; Leontopoulos, 2005; Low & Lim, 2004). Nippon Kaiji Kyokai (NK) has developed new CMFD technologies for the marine power machinery (An aligned, 2006; Leontopoulos, 2005; Low & Lim, 2004). China Classification Society (CCS) has compiled the “Guide of Diesel Engine grease condition monitoring” and “Guide of Propeller condition monitoring”.

Benefited from decades of development, numerous CMFD methodologies have been put forward. These methods can be divided into several major categories, such as the performance parameter monitoring, vibration analysis, oil analysis, and instantaneous speed monitoring etc. The information flow for machinery and equipment condition monitoring is shown in Figure 1 (Liu & Yan, 2010). The performance parameter monitoring is usually used to warn of abnormal operation of the machines under the condition that the concerned specific parameters (such as the temperature, pressure, etc.) have exceeded the ‘baseline’. The oil analysis has been now used for marine equipment condition monitoring and fault diagnosis, and the commercial services have already been provided by the Mobil Oil Company and Lloyd’s Register. It mainly concerns the geometrical characteristics and chemical characteristics of the wear particles in the lubricant. As for the vibration analysis and the instantaneous speed monitoring, they are the most used and simplest methods for the CMFD of marines. The recent advancements on the smart sensor technique and signal processing have made the vibration analysis and the instantaneous speed monitoring very efficient and easy to realize for industrial application.

*Figure 1. The information flow for marine machinery and equipment using CMFD technique (Liu & Yan, 2010)*



18 more pages are available in the full version of this document, which may be purchased using the "Add to Cart" button on the publisher's webpage:  
[www.igi-global.com/chapter/remote-fault-diagnosis-system-marine/69684](http://www.igi-global.com/chapter/remote-fault-diagnosis-system-marine/69684)

## Related Content

---

### Robust Control Methods for Finite Time Synchronization of Uncertain Nonlinear Systems

Kammogne Soup Soup Tewa Alainand Fotsin Hilaire Bertrand (2021). *Handbook of Research on Modeling, Analysis, and Control of Complex Systems* (pp. 364-398).

[www.irma-international.org/chapter/robust-control-methods-for-finite-time-synchronization-of-uncertain-nonlinear-systems/271047](http://www.irma-international.org/chapter/robust-control-methods-for-finite-time-synchronization-of-uncertain-nonlinear-systems/271047)

### A System Dynamics Model for Subsistence Farmers' Food Security Resilience in Sub-Saharan Africa

Benedict Oyoand Billy Mathias Kalema (2016). *International Journal of System Dynamics Applications* (pp. 17-30).

[www.irma-international.org/article/a-system-dynamics-model-for-subsistence-farmers-food-security-resilience-in-sub-saharan-africa/144733](http://www.irma-international.org/article/a-system-dynamics-model-for-subsistence-farmers-food-security-resilience-in-sub-saharan-africa/144733)

### Soft-Computing Control of Ball and Beam System

Ashwani Kharolaand Pravin P. Patil (2018). *International Journal of Applied Evolutionary Computation* (pp. 1-21).

[www.irma-international.org/article/soft-computing-control-of-ball-and-beam-system/214893](http://www.irma-international.org/article/soft-computing-control-of-ball-and-beam-system/214893)

### Dynamic Reconfiguration of Middleware for Ubiquitous Computing

Antonio Corradi, Enrico Lodoloand Stefano Monti (2012). *Technological Innovations in Adaptive and Dependable Systems: Advancing Models and Concepts* (pp. 38-52).

[www.irma-international.org/chapter/dynamic-reconfiguration-middleware-ubiquitous-computing/63573](http://www.irma-international.org/chapter/dynamic-reconfiguration-middleware-ubiquitous-computing/63573)

### Technological and Educational Challenges of Resilient Computing

Luca Simoncini (2012). *Technological Innovations in Adaptive and Dependable Systems: Advancing Models and Concepts* (pp. 128-144).

[www.irma-international.org/chapter/technological-educational-challenges-resilient-computing/63578](http://www.irma-international.org/chapter/technological-educational-challenges-resilient-computing/63578)