

Chapter 23

Investigation of Deforestation of Environmental Protection Areas of Madeira River Permanent Preservation Areas in Rondônia Amazon, Brazil

Marcelo Rodrigues dos Anjos

*Federal University of Amazonas, and Centro de Estudos da Cultura e Meio Ambiente da Amazônia
RIOTERRA, Brazil*

Marla Schulz

Empresa Brasileira de Geoprocessamento (EMBRAGEO), Brazil

ABSTRACT

The deforestation of the Amazon protected areas involves a series of deleterious environmental factors, such as social conflicts, loss of biodiversity, soil degradation, deterioration of watersheds, and environmental services offered, that still are not considered in studies of environmental impacts and when studied, are not valued economically or end up being undersized, resulting in loss of economic opportunities associated to the sustainable use of natural resources in areas of interest for conservation. This study had as objective to point out illegal activities in and around the area of special environmental protection (APA) of the Madeira River in Rondonia in accordance with the provisions of the Terms of Reference, No. 001/CAO-AMB/MP/2006, with action and support of interagency bodies BPM/PM, SEDAM, SIPAM, INCRA, IBAMA, EMBRAGEO in order to understand the dynamics of deforestation in protected areas and indigenous lands of the state.

DOI: 10.4018/978-1-4666-3613-2.ch023

INTRODUCTION

The Environmental Protection Area of the Madeira River was established by Decree No. 5114 of June 6th, 1991, and according to this, it covers an approximate area of 6741 hectares. The Environmental Protection Area is an extensive area in general, with some degree of human occupation, with its attributes abiotic, biotic, aesthetic and cultural especially important for the quality of life and well being of human populations. Its basic objectives are to protect the biological diversity, to discipline the process of occupation and to ensure the sustainable use of natural resources, and it consists of public or private lands (BRASIL, 2000).

The Environmental Protection Areas belong to the category of conservation units of direct use, that is, areas where it is allowed to direct economic exploration and exploitation of natural resources, since it occurs in a planned and regulated manner by the responsible agencies (BRASIL, 1988). They are identified as units of sustainable use and fall into this category, the Environmental Protection

Areas, State Forests of Sustained Productivity, National Forests and Extractive Reserves (BRASIL, 2000).

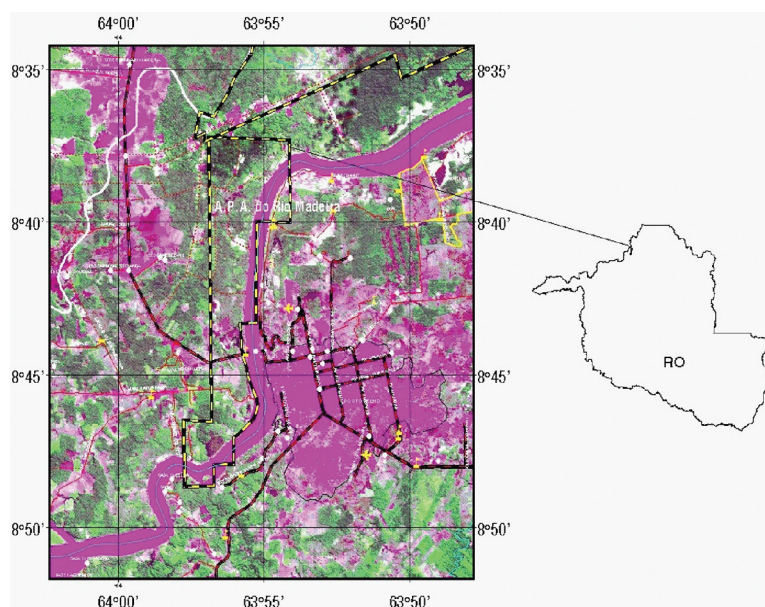
LOCATION OF AREA

The Environmental Protection Area of the Madeira River, with its buffer zone, is located in the Northwest region zoogeographical ZZ1 in the state of Rondonia within the political boundaries of administrative Porto Velho. The geographical references are between the coordinates of the upper left corner ($63^{\circ} 57' 52''$ W / $08^{\circ} 37' 10''$ S) and the lower right corner ($63^{\circ} 53' 23''$ W / $08^{\circ} 48' 44''$ S) (RONDÔNIA, 2002) (Figure 1).

DESCRIPTION OF THE AREA

The area lies between the parallels of segments 8 to 9 S and meridians $63^{\circ} 00'$ to $64^{\circ} 30'$ WGr (RADAMBRASIL, 1978).

Figure 1. Location of the Environmental Protection Area of the Madeira River in Rondonia state (IBGE, n.d.) (Limit Political Administrative 1:250,000)



7 more pages are available in the full version of this document, which may be purchased using the "Add to Cart" button on the publisher's webpage:

www.igi-global.com/chapter/investigation-deforestation-environmental-protection-areas/75393

Related Content

Reinventing Operating Models for Sustainable Organizational Performance: The Case of the Big Search

Julijana Nicha Andrade (2022). *Handbook of Research on Changing Dynamics in Responsible and Sustainable Business in the Post-COVID-19 Era* (pp. 288-302).

www.irma-international.org/chapter/reinventing-operating-models-for-sustainable-organizational-performance/294424

Multimedia E-Learning Education in Nigeria and Developing Countries of Africa for Achieving SDG4

Ugochukwu O. Matthew and Jazuli S. Kazaure (2022). *Research Anthology on Measuring and Achieving Sustainable Development Goals* (pp. 463-486).

www.irma-international.org/chapter/multimedia-e-learning-education-in-nigeria-and-developing-countries-of-africa-for-achieving-sdg4/290924

Comparative Performance and Energy Efficiency Analysis of JVM Variants and GraalVM in Java Applications

Thalita Grange Vergilio, Long Do Ha and Ah-Lian G. Kor (2023). *International Journal of Environmental Sustainability and Green Technologies* (pp. 1-32).

www.irma-international.org/article/comparative-performance-and-energy-efficiency-analysis-of-jvm-variants-and-graalvm-in-java-applications/331401

Assessing the Role of Entrepreneurial Development Programs, Digital India, and Sustainable Investments in Accelerating Financial Inclusion Initiatives

Mukul Bhatnagar and Nitin Pathak (2024). *Sustainable Investments in Green Finance* (pp. 1-16).

www.irma-international.org/chapter/assessing-the-role-of-entrepreneurial-development-programs-digital-india-and-sustainable-investments-in-accelerating-financial-inclusion-initiatives/333970

Diagnosing Brain Tumors Using a Super Resolution Generative Adversarial Network Model

Ashray Gupta, Shubham Shukla and Sandeep Chaurasia (2022). *International Journal of Social Ecology and Sustainable Development* (pp. 1-18).

www.irma-international.org/article/diagnosing-brain-tumors-using-a-super-resolution-generative-adversarial-network-model/314158