

Chapter 15

Methodology of Climate Change Impact Assessment on Forests

Mostafa Jafari

Regional Institute of Forest and Rangelands (RIFR), Iran

ABSTRACT

Climate change is one of the challenging issues in various countries. Climate change and climate variability and global warming and its effects on natural resources, plants, animals, and on human life are among the subjects that received the attention of scientists and politicians in recent years. Climate change challenges need to be considered in various dimensions. To both understand the present climate and to predict future climate change, it is necessary to have both theory and empirical observation. Any study of climate change involves the construction (or reconstruction) of time series of climate data. How these climate data vary across time provides a measure (either quantitative or qualitative) of climate change. Types of climate data include temperature, precipitation (rainfall), wind, humidity, evapotranspiration, pressure, and solar irradiance. This chapter explores a methodology of measuring climate change's impact on forests.

INTRODUCTION

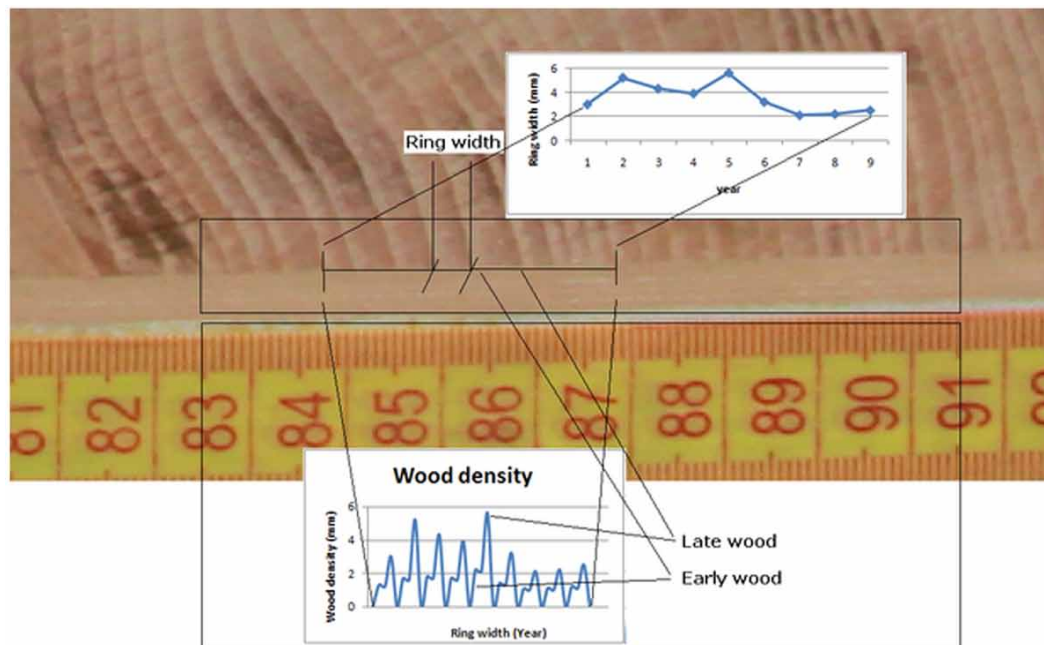
Climate change is one of the main challenging issues in various countries (Jafari, 2013b) in current century. Climate change and climate variability and Global Warming and its' effects on natural resources, plants, animal and in general on human life are among subjects that received attention of scientists and politicians in recent years. Climate change challenges need to be considered in various dimensions (Jafari, 2013c). To both understand the present climate and to predict future climate change, it is necessary to have both theory and empirical observation. Any study of climate change involves the construction (or reconstruction) of time series of climate data. How these climate data vary across time provides a measure (either quantitative or qualitative) of climate change. Types of climate data include temperature, precipitation (rainfall), wind, humidity, evapotranspiration, pressure and solar irradiance (aric, 2008). Climate change assessments and evaluation should be done by using recorded observation data as well as prepared and provided proxy data (Jafari, 2010). Plant ecophysiological study has very important

DOI: 10.4018/978-1-5225-7359-3.ch015

role to recognize climate changes (Jafari, 2007). Trees and also woods can be used as archive of past events. Climate change will strongly affect water resources, plant communities and wildlife in the arid and semi-arid regions (FAO, 2009). Water, environment humidity and temperature are main factors of plant growth. Majority of plant and forest ecosystems on the earth are formed under these two main factors. Whatever amount of humidity and required water are available and also favorable temperature for plant growth cause plant community reach higher plants and trees and forest ecosystems would develop. In fact plants are important climate indicators. Trees are not an exception. Plants, especially, trees are sensitive to their environmental changes, and tree-ring width is one of the reliable proxies of ambient environmental conditions. Climate and environmental changes affect natural ecosystems as well as planted forests (Kiaee and Jafari, 2014). Investigation of quantity and quality of these growths could help to consider past climatic conditions. Measuring and recording tree rings' widths and its' densities of early woods and late woods can provide valuable data resources to produce time series and consider its correlation with climate factors in the same time periods (Figure 1).

Seasonal changes in temperate climatic region effect on tree rings widths periodically. In spring and summer time plants grow better than unpleasant seasons like fall and winter. The outermost layer of a tree is composed of bark. Bark itself is composed of two tissues: an innermost layer of live phloem, and an outer layer of periderm (the bark 'proper'), which has an outermost layer of waterproofing cork (phellum) which protects the wood to some degree from insects, etc (Figure 2). The cork has its own cambium (phellogen) between the phloem and cork layer. Only the outermost layer of a tree is alive (essentially only the phellogen, phloem, cambium, and maturing xylem of the current year's growth).

*Figure 1. Tree ring width and densities, Fagus orientalis (beech tree), Mazandaran province mid-elevation forest (MA II F3)
(Author, 2010)*



18 more pages are available in the full version of this document, which may be purchased using the "Add to Cart" button on the publisher's webpage:

www.igi-global.com/chapter/methodology-of-climate-change-impact-assessment-on-forests/211873

Related Content

Identification of Green Procurement Drivers and Their Interrelationship Using Fuzzy TISM and MICMAC Analysis

Surajit Bag (2019). *Advanced Methodologies and Technologies in Engineering and Environmental Science* (pp. 167-186).

www.irma-international.org/chapter/identification-of-green-procurement-drivers-and-their-interrelationship-using-fuzzy-tism-and-micmac-analysis/211871

Use of Hydrogen and Fuel Cells for Refrigerated Transport

Raquel Garde, Sindia Casado, Fernando Jimenez, Gabriel Garcia-Naveda and Monica Aguado (2017). *Renewable and Alternative Energy: Concepts, Methodologies, Tools, and Applications* (pp. 1146-1184).

www.irma-international.org/chapter/use-of-hydrogen-and-fuel-cells-for-refrigerated-transport/169629

Polishing Of Landfill Leachate

Christopher Oluwakunmi Akinbile (2016). *Control and Treatment of Landfill Leachate for Sanitary Waste Disposal* (pp. 349-368).

www.irma-international.org/chapter/polishing-of-landfill-leachate/141859

Adaptation to Impacts of Climate Change on the Food and Nutrition Security Status of a Small Island Developing State: The Case of the Republic of Seychelles

Antoine Marie Moustache (2015). *Impacts of Climate Change on Food Security in Small Island Developing States* (pp. 96-129).

www.irma-international.org/chapter/adaptation-to-impacts-of-climate-change-on-the-food-and-nutrition-security-status-of-a-small-island-developing-state/118022

Traditional Water Management System for Climate Change Adaptation in Mountain Ecosystems

Bhaskar Shrinivasulu Padigala (2017). *Reconsidering the Impact of Climate Change on Global Water Supply, Use, and Management* (pp. 9-32).

www.irma-international.org/chapter/traditional-water-management-system-for-climate-change-adaptation-in-mountain-ecosystems/171248