

Chapter 9

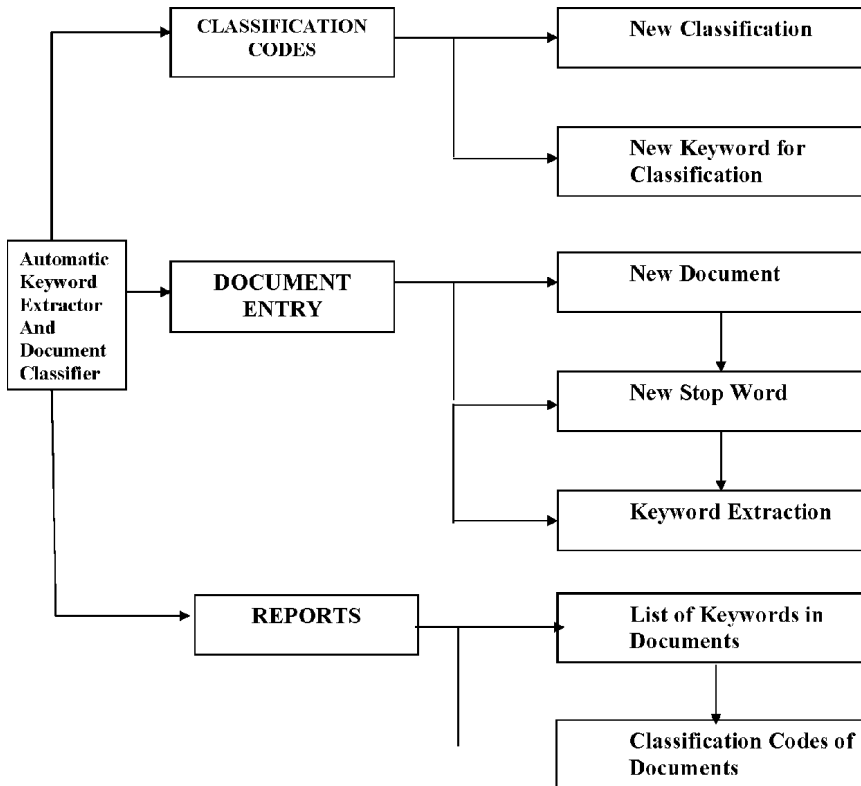
Input Output for Document Classifier

ABSTRACT

The report generated displays a list of automatically generated keywords in each document. A document is allowed to have any number of keywords. As the keywords are getting generated at any pass of the loop, there is no restriction on the width of keywords. Another report is also generated to display the list of the document class. If a document finds its match with more than one class (overlapping classes), the selection of the final class for a document is done on the basis of the maximum weight of the keywords in each class.

MENU DESIGN

Figure 1. The hierarchy chart of the menu interface of the document classifier



12 more pages are available in the full version of this document, which may be purchased using the "Add to Cart" button on the publisher's webpage: www.igi-global.com/chapter/input-output-for-document-classifier/268468

Related Content

A Survey of Parallel and Distributed Data Warehouses

Pedro Furtado (2009). *International Journal of Data Warehousing and Mining* (pp. 57-77).

www.irma-international.org/article/survey-parallel-distributed-data-warehouses/1826

Influence of Domain and Model Properties on the Reliability Estimates' Performance

Zoran Bosnicand Igor Kononenko (2009). *International Journal of Data Warehousing and Mining* (pp. 58-76).

www.irma-international.org/article/influence-domain-model-properties-reliability/37405

A Multi-Agent Neural Network System for Web Text Mining

Lean Yu, Shouyang Wangand Kin Keung Lai (2009). *Handbook of Research on Text and Web Mining Technologies* (pp. 201-226).

www.irma-international.org/chapter/multi-agent-neural-network-system/21726

Is Information Ethics Culturally Relative?

Philip Brey (2009). *Social Implications of Data Mining and Information Privacy: Interdisciplinary Frameworks and Solutions* (pp. 1-14).

www.irma-international.org/chapter/information-ethics-culturally-relative/29141

A Stock Trading Expert System Established by the CNN-GA-Based Collaborative System

Jimmy Ming-Tai Wu, Lingyun Sun, Gautam Srivastava, Vicente Garcia Diazand Jerry Chun-Wei Lin (2022). *International Journal of Data Warehousing and Mining* (pp. 1-19).

www.irma-international.org/article/a-stock-trading-expert-system-established-by-the-cnn-ga-based-collaborative-system/309957