

Chapter 4.6

Using Soclab for a Rigorous Assessment of the Social Feasibility of Agricultural Policies

Françoise Adreit

Université Toulouse 2 - Le Mirail, France

Pascal Roggero

Université Toulouse 1 - Capitole, France

Christophe Sibertin-Blanc

Université Toulouse 1 - Capitole, France

Claude Vautier

Université Toulouse 1 - Capitole, France

ABSTRACT

This paper presents a theoretical and methodological framework to take into consideration the social dimension in a sustainable development project. To do this, the authors have developed the SocLab software environment, which implements a formalization of a well-established sociological theory, and enables the modeling of social organizations, to analyze their properties and to simulate social actors' behaviors. SocLab was used to assess the social acceptability of new agricultural practices more in line with the preservation of water resources and natural environments, in a well defined context. The paper shows how it was used and presents the main results.

1. INTRODUCTION

The reference model for sustainable development gives an equal importance to the economic, environmental and social dimensions. In practice,

little attention is paid to the social dimension: the biophysical aspects and the economic cost of the environmental degradation and its compensation by public policies are considered with much more attention. This situation is due, to a large amount, to the informal and subjective nature of the results

DOI: 10.4018/978-1-4666-0882-5.ch4.6

provided by sociological studies; they do not feature the properties of quantitative scientific knowledge, and they are difficult to handle and to merge with the results provided by economics and environmental sciences.

As a foreseeable consequence of this lack of attention to the social dimension, many public policies are quite ineffective to change the social practices toward the desirable direction. The social impact of the proposed measures raising some fears, they are not accepted by the actors and thus they are not applied (Vautier et al., 2009).

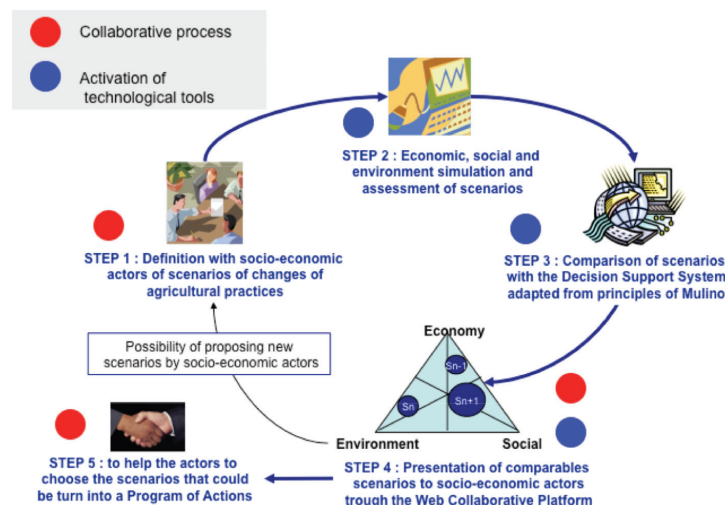
The *Life* European project *Concert'Eau* was a proof-of-concept project aiming at demonstrating the feasibility to define a set of new agricultural measures proposed and accepted by the stakeholders, following the process shown in Figure 1. In this project, we were in charge, in the step 2, to assess the social acceptability of the measures proposed during the step 1. To provide a quantitative evaluation of the social dimension of each proposed measure, we have used a rigorous theoretical and methodological framework whose generic nature makes it appropriate to model and analyze the social dimension of other cases:

- We base our work on a well-established social theory, the Sociology of the Organized Action (section 2);
- We have formalized this theory as a meta-model for the description of social organizations in a rigorous way (section 3);
- We have implemented a software platform, *SocLab*, which enables to edit the model of an organization, to explore its states and to simulate the behavior of the social actors (section 4).
- section 5 presents how we have used this framework to estimate the social feasibility of agricultural measures in the *Concert'Eau* project.

2. THE SOCIOLOGICAL BASE: THE SOCIOLOGY OF THE ORGANIZED ACTION

The Sociology of the Organized Action (SOA) (Crozier, 1964; Crozier & Friedberg, 1977; Friedberg, 1993) defines the organization like “a complex set of intersected and interdependent games through which persons, often provided with very different assets, seek for maximize their

Figure 1. The process of the Concert'Eau project



13 more pages are available in the full version of this document, which may be purchased using the "Add to Cart" button on the publisher's webpage:
www.igi-global.com/chapter/using-soclab-rigorous-assessment-social/66145

Related Content

Circular, Smart, and Connected Cities: A Key for Enhancing Sustainability and Resilience of the Cities

Begum Sertyesilisik (2023). *Research Anthology on BIM and Digital Twins in Smart Cities* (pp. 230-243).
www.irma-international.org/chapter/circular-smart-and-connected-cities/315454

Organizational Socio-Ecology and Green Technological Innovation

José G. Vargas-Hernandez, María Fernanda Higuera-Cota and Omar C. Vargas-González (2023).
Intersecting Health, Livability, and Human Behavior in Urban Environments (pp. 83-101).
www.irma-international.org/chapter/organizational-socio-ecology-and-green-technological-innovation/322920

Smart Urbanism and Digital Activism in Southern Italy

Arturo Di Bella (2015). *Emerging Issues, Challenges, and Opportunities in Urban E-Planning* (pp. 114-140).
www.irma-international.org/chapter/smart-urbanism-and-digital-activism-in-southern-italy/125701

Exploring E-Planning Practices in Different Contexts: Similarities and Differences Between Helsinki and Sydney

Sirkku Wallin, Joanna Saad-Sulonen, Marco Amati and Liisa Horelli (2012). *International Journal of E-Planning Research* (pp. 17-39).
www.irma-international.org/article/exploring-planning-practices-different-contexts/70080

Integrating Online and Onsite Participation in Urban Planning: Assessment of a Digital Participation System

Rosa Thoneick (2021). *International Journal of E-Planning Research* (pp. 1-20).
www.irma-international.org/article/integrating-online-and-onsite-participation-in-urban-planning/268002